

Be sure, be safe.

**COSMOS**

PORTABLE GAS DETECTOR

# XP-3000 SERIES

Reliable and flexible lightweight  
portable gas detector

for environmental safety  
and spot check applications

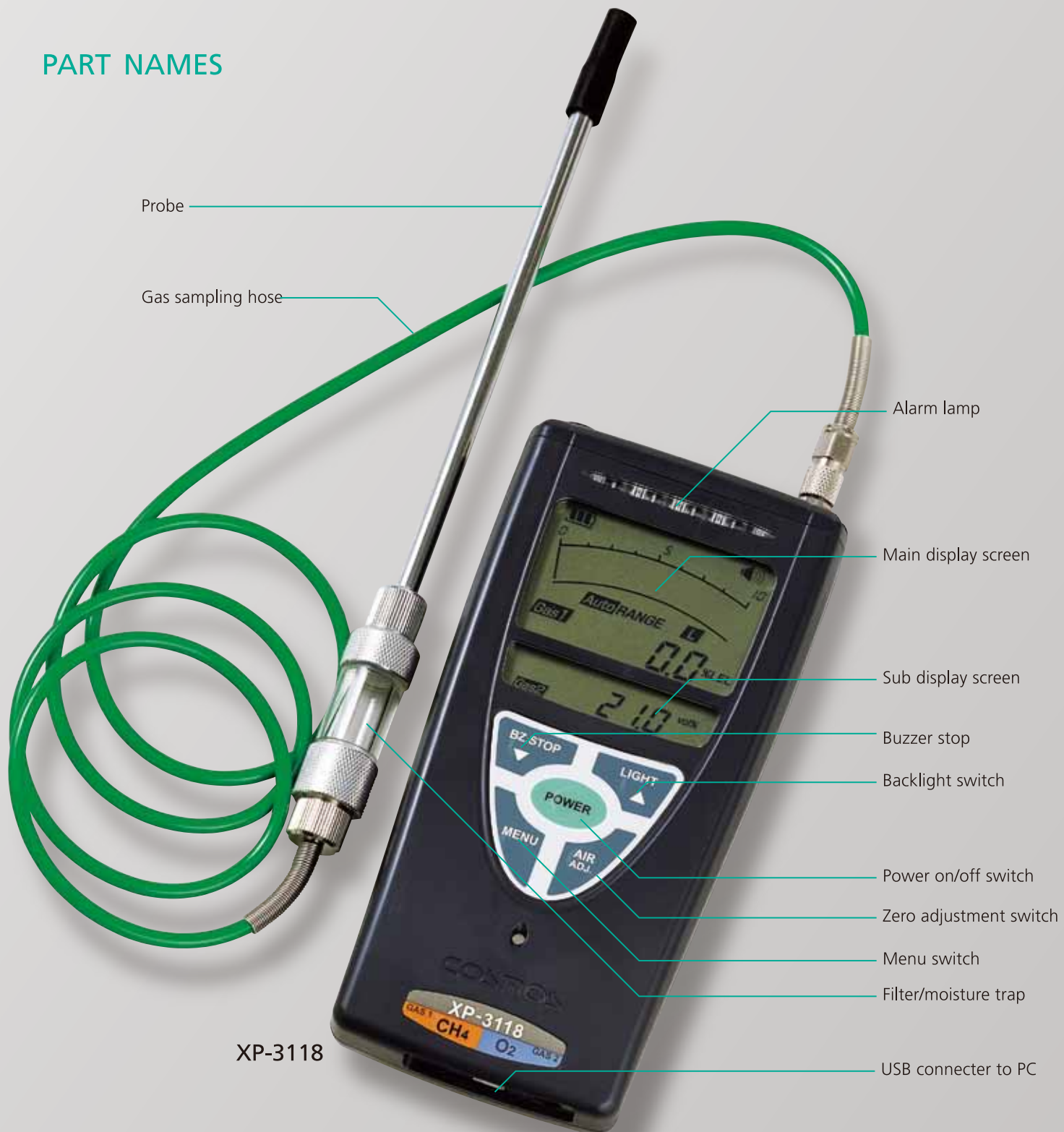


**ATEX**    **PESO** 

Please make your specification  
by filling in the type of a gas.  
Ex: Methane, Isobutane, Propane, Ethanol,  
Hydrogen, Acetylene, etc.

**XP-3110**  
GAS 1 CH 4

## PART NAMES



## Typical Applications

Oil&Gas, Power Stations, Petrochemical, Chemical Plants, Boiler Rooms, Automotive



**Combustible gas detector**

**XP-3110**  100%LEL

For measurement of combustible gas concentration of 0-10/0-100%LEL. Suitable for monitoring a risk of explosion. Built-in correction factors for up to 5 flammable gases. (factory option)

*Ex: Methane, Isobutane, Propane, Ethanol, Hydrogen, Acetylene, etc.*

**High concentration gas detector**

**XP-3140**   100vol%

For measurement of high concentration gas up to 100vol%. Suitable for inspecting the amount of gas remaining in tanks.

*Ex: Methane, Hydrogen, Helium, Argon, Butane, Carbon dioxide, etc.*

**High sensitivity explosive gas detector**

**XP-3160**  Ppm

High sensitivity detector with 0-500ppm measuring range (Standard) Best suited for measuring toxic and combustible gases in the ppm range. Built-in correction factors for up to 5 flammable gases. (factory option)

*Ex: Methane, Isobutane, Propane, Ethanol, Hydrogen, Acetylene, Toluene, o-Xylene, Benzene, etc.*

**Oxygen indicator**

**XP-3180**  25.0vol%

Extractive oxygen concentration indicator.

Convenient for measuring oxygen concentration on site where sampling is difficult.

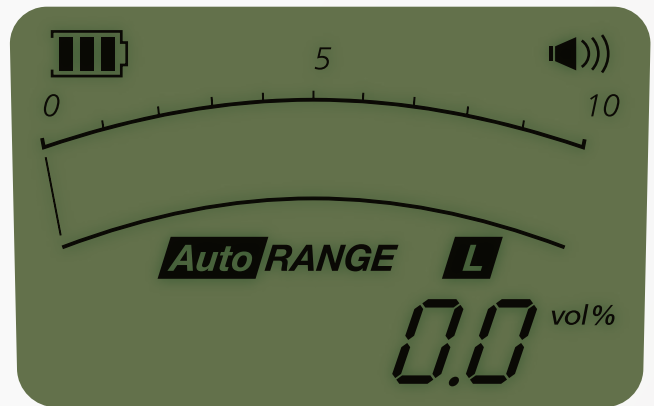
**Multi-Gas detector**

**XP-3118**   100%LEL / 25.0vol%

Simultaneous monitoring of combustible gas and oxygen concentration. Perfect for compliance work, safety and environmental monitoring.

*Ex: Methane, Isobutane, Propane, Ethanol, Hydrogen, Acetylene, etc.*

**FEATURE**



**New digital display with a simulated analog scale**

Continuous digital numeric readout and simulated analog scale are displayed simultaneously.

Displays gas concentration and the level at a glance.

**Lightweight 450g (16 oz.) and compact**

Easy to operate and realize downsizing designs, the weight is 35% lighter than previous version.

**Auto-ranging function**

L-Range and H-Range automatically change according to the gas concentration.

**Self-diagnostics functions**

Detects low sample flow, sensor disconnection, low battery, and circuit integrity

**Data-logging function**

Standard 10 hours at 5 seconds intervals (User-selectable), downloadable to PC with data download software (option).

**Built-in sample draw pump**

Standard 1-meter sampling hose with probe. Optional sampling hoses up to 30 meters are available.

**Explosion-proof structure**

## SPECIFICATIONS

Model	XP-3110	XP-3140	XP-3160	XP-3118		XP-3180
Gas Detected	Combustible gases and vapors (specify gas detected)	Methane, Propane, Argon, Carbon dioxide, etc. (specify gas detected)	Combustible gases and vapors (specify gas detected)	Combustible gases and vapors (specify gas detected)	Oxygen	Oxygen
Detection Principle	Catalytic combustion	Thermal conductivity	Catalytic combustion	Catalytic combustion	Galvanic cell	Galvanic cell
Sampling Method	Extractive	Extractive	Extractive	Extractive		Extractive
Detection Range	0-100%LEL	0-100vol%	0-500/5,000ppm or 0-1,000/10,000ppm	0-100%LEL	0-25.0vol%	0-25.0vol%
Indication Accuracy (Under identical conditions)	±5% of full scale	H range: ±5% L range: ±10%	H range: ±5% L range: ±10%	±5% of full scale	±0.3vol% (Compliant with JIS T 8201)	±0.3vol% (Compliant with JIS T 8201)
Alarm Set Value	20%LEL	50vol%	250 or 500ppm	20%LEL	18.0vol%	18.0vol%
Display	LCD digital (with backlight) Digital display: 0-100%LEL Digital bar display: Auto range changeover 0-10%LEL (Lrange) 0-100%LEL (Hrange)	LCD digital (with backlight) Digital display: 0-100vol% Digital bar display: Auto range changeover 0-10vol% or 0-30vol% (L range) 0-100vol% (H range)	LCD digital (with backlight) Digital display: 0-5,000ppm or 0-10,000ppm Digital bar display: Auto range changeover 0-500ppm or 0-1,000ppm (L range) 0-5,000ppm or 0-10,000ppm (H range)	LCD digital (with backlight) Digital display Digital bar display		LCD digital (with backlight) Digital display Digital bar display
Alarm Indication	Gas alarm: Intermittent buzzer, Red lamp flashing Error alarm: Buzzer, Red lamp flashing, LCD display			Gas alarm: Intermittent buzzer, Red lamp flashing Error alarm: Buzzer, Red lamp flashing, LCD display		
Explosion-Proof Structure	Exibd IIC T3 (TIIIS) Ⓢ IIC G Exdib IIB T4 Gb (ATEX) Exdib IIB T4 Gb (IECEX) Class I, Zone 1, AExdib IIB T4 Hazardous Locations (UL)				Exib IIB T3 (TIIIS)	
Operation Temperature	0 to 40°C			0 to 40°C		-10 to 40°C
Power Source	4×AA alkaline dry battery			4×AA alkaline dry battery		
Battery Life *1	Up to 20 hours	Up to 30 hours	Up to 20 hours	Up to 20 hours	Up to 20 hours	Up to 100 hours
Dimensions	W82×H162×D36mm			W82×H162×D36mm		
Weight	Approx. 450g (16oz.) (excluding batteries)			Approx. 450g (16oz.) (excluding battery)		
Standard Accessories	Soft case, 4×AA alkaline dry battery, Gas sampling hose (1meter), Probe with filter/moisture trap			Soft case, 4×AA alkaline dry battery, Gas sampling hose (1meter), Probe with filter/moisture trap		
Optional Accessories	2-30meter gas sampling hose, Gas dilution probe, Data download software (CD-ROM software and USB cable)			2-30meter gas sampling hose, Gas dilution probe, Data download software (CD-ROM software and USB cable)		

\*1 Battery life time is subject to environmental and storage conditions.

## STANDARD ACCESSORIES

Special soft case to prevent static build up



### NEW COSMOS ELECTRIC CO., LTD.

#### New Cosmos Electric Co., Ltd. [Overseas Business Division]

2-6-2 Hamamatsu-cho, Minato-ku, Tokyo 105-0013 JAPAN  
TEL. +81-3-5403 2715 Email. e-info@new-cosmos.co.jp www.new-cosmos.co.jp/en

#### New Cosmos-BIE [B.V.]

1704 SG Heerhugowaard The Netherlands  
TEL. +31-72-576 5630 Email. sales@newcosmos-europe.com www.newcosmos-europe.com

#### New Cosmos Electric (Shanghai) Co., Ltd.

4th Plant No.385, Dongxing Road, Songjiang Industrial Zone, Shanghai, China 201613  
TEL. +86-21-6774 3138 Email. e-info@new-cosmos.co.jp www.new-cosmos.co.jp

#### New Cosmos Electric Co., Ltd. [Korea Office]

Bundang Doosan We've Pavilion A-2222 7, Jeongja-dong, Bundang-gu, Seongnam-si, Gyeonggi-do, Korea 463843  
TEL. +82-70-8615- 2715 Email. e-info@new-cosmos.co.jp www.new-cosmos.co.jp

#### New Cosmos Electric Co., Ltd. [Taiwan Office]

8F, No.419, Sec.2, Gongdao 5th Road, Hsinchu city, Taiwan 30070  
TEL. +886-3-574 4593 Email. e-info@new-cosmos.co.jp www.new-cosmos.co.jp



### SAFETY WARNING

Read the operating instructions thoroughly before use. Always operate in accordance with the instructions.

Be sure to choose the sensor designed to detect the required type of gas. Use of the wrong sensor type could cause an accident.